

Did You Know?

HCS 2010™ ...

- **Implements HCM 2010 procedures including multimodal operations?**

...Analyzing intersection, highway, freeway segments and facilities

- **Analyzes multiple signalized intersections using HCM 2010 Urban Streets?**

...Modeling the effects of access points along an urban street corridor

- **Generates optimized signal timing based on HCM 2010 Urban Streets?**

...Producing solutions that minimize arterial and overall delay and stops

- **Integrates Signalized Intersections, Urban Streets and Interchanges?**

...Incorporating interchange ramp terminals within urban streets analyses

- **Models congested signalized intersections using multiple-period analysis?**

...As the only effective HCM method to generate realistic results

- **Imports multiple intersection and multiple time period data?**

...Converting your data file format into one that Streets can import directly

- **Remains faithful to the HCM 2010 procedures including updates?**

...Continuously with the Highway Capacity and Quality of Service committee

- **Plans to implement Travel Time Reliability and Alternative Intersections soon?**

...Modeling DDI/DCD, CFI/DLT, RCUT and MUT designs now (see page two)



McTrans Center
University of Florida
Civil & Coastal Engineering
PO Box 116585
Gainesville FL 32611-6585

UF | **Transportation Institute**
UNIVERSITY of FLORIDA

Phone: 352-392-0378
Toll-Free: 1-800-226-1013
Fax: 352-392-6629
E-mail: mctrans@ce.ufl.edu
Web: mctrans.ce.ufl.edu

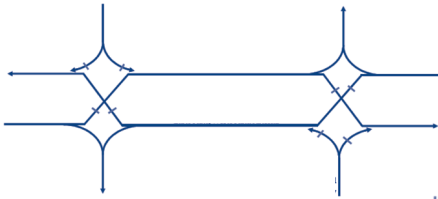
ALTERNATIVE

Intersections and Interchanges

HCS 2010 Implementation

Alternative Intersections and Interchanges are being implemented within the Streets module, modifying the Interchanges analysis for DDI designs and adding upstream and downstream adjacent intersections to model U-turn or crossover components for DLT, RCUT and MUT designs. Selection dialogs, lane configurations and signal phasing examples are shown below:

Diverging Diamond Interchange (DDI)

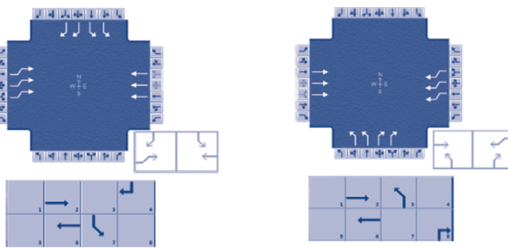


Interchanges

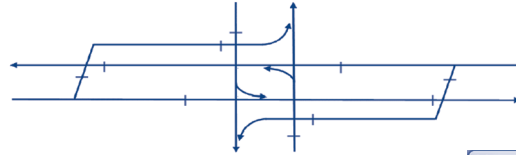
Interchange Intersection

Interchange Type Diamond

Diverging Diamond



Displaced Left Turn (DLT)



Alternative Intersections

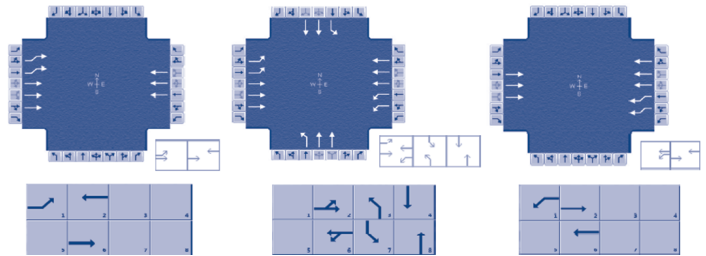
Median U-Turn (MUT)

Restricted Crossover U-Turn (RCUT)

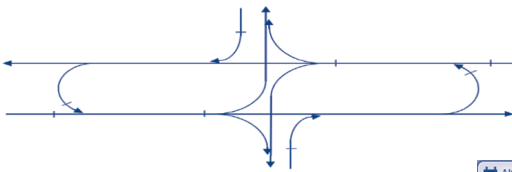
Displaced Left-Turn (DLT)

Standard Intersection

OK Cancel



Restricted Crossover U-Turn (RCUT)



Alternative Intersections

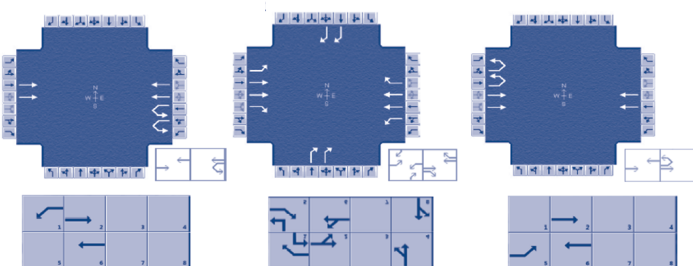
Median U-Turn (MUT)

Restricted Crossover U-Turn (RCUT)

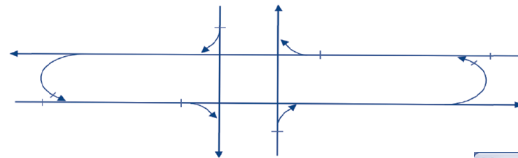
Displaced Left-Turn (DLT)

Standard Intersection

OK Cancel



Median U-Turn (MUT)



Alternative Intersections

Median U-Turn (MUT)

Restricted Crossover U-Turn (RCUT)

Displaced Left-Turn (DLT)

Standard Intersection

OK Cancel

